

# GALLUP Student Poll Results Summary

2013-2014 Little Rock

## Overview

The Gallup Student Poll measures hope, engagement, and well-being. SIATech administered the poll in Fall 2013 along with nearly a half million other high school students nationwide. In the four years administering the poll, many of the questions have received higher responses than student responses nationwide. The poll reflects the many ways SIATech provides an excellent educational environment for its students.

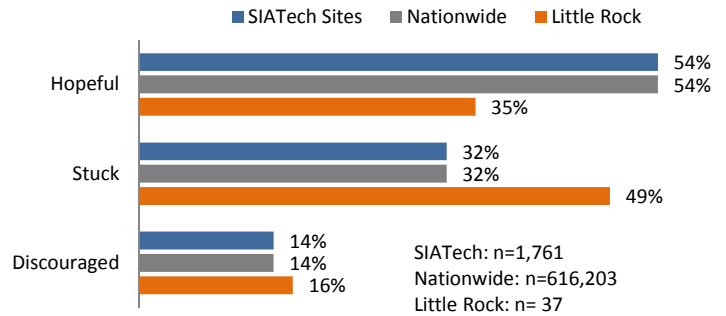
## Hope

The ideas and energy we have for the future. Hope drives attendance, credits earned, and high school GPA, and is a predictor of college GPA and retention.

35% of SIATech Little Rock students were hopeful in 2013-2014.

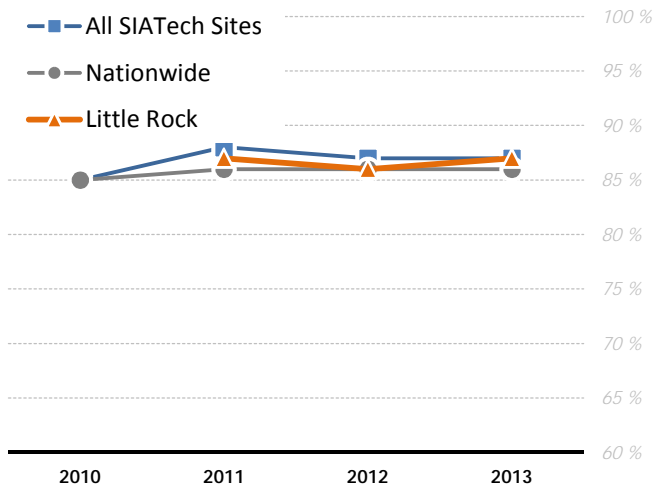
SIATech Little Rock nears or surpasses national averages in the following hope indicators: " Confidence in graduation, confidence in getting good grades, goal pursuit, and confidence in finding a good job.t

### Hope Overview



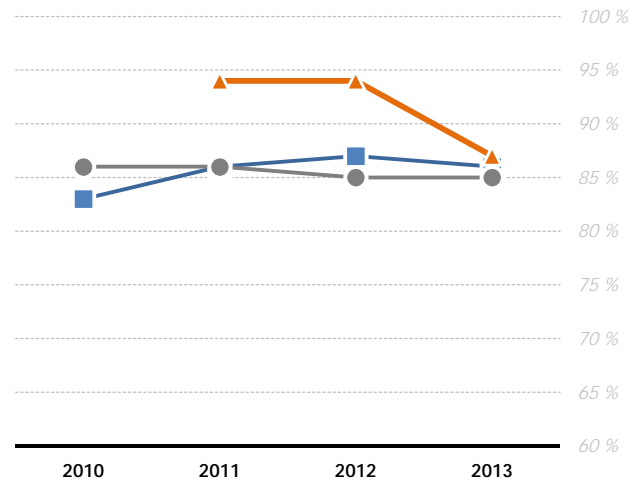
## Good Grades

Q: I can think of many ways to get good grades.



## Find a Good Job

Q: I know I will find a good job after I graduate.

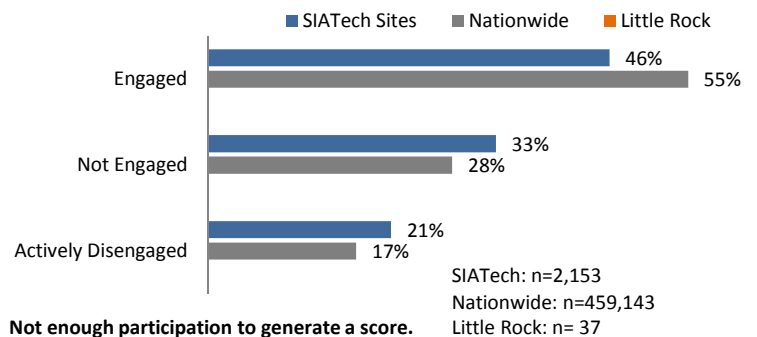


## Engagement

The involvement and enthusiasm for school. According to Gallup, engagement scores separate high-performing from low-performing schools.

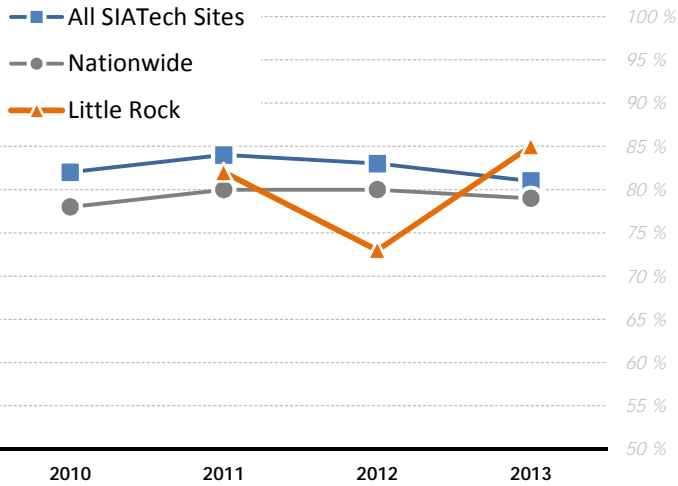
SIATech Little Rock surpasses national responses in the following engagement indicators: Schoolwork is considered important, school provides an opportunity to do their best, the school is committed to strengths of each student, and have an inspiring teacher.

### Engagement Overview



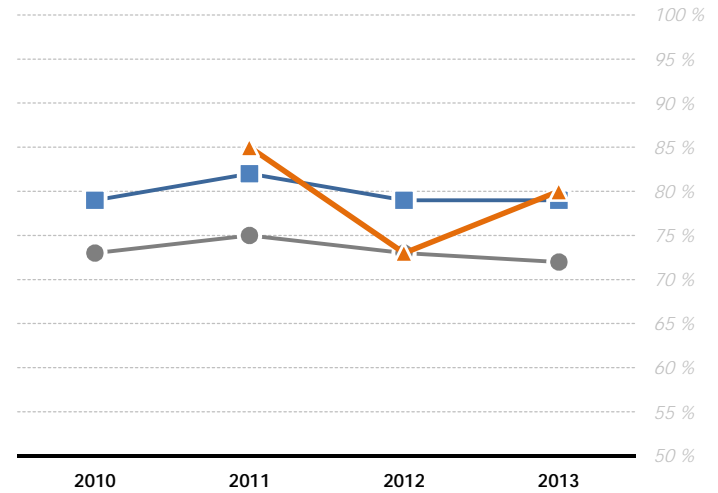
### Schoolwork Important

Q: My teachers make me feel my schoolwork is important.



### Opportunity to do Best

Q: At this school, I have the opportunity to do what I do best everyday.

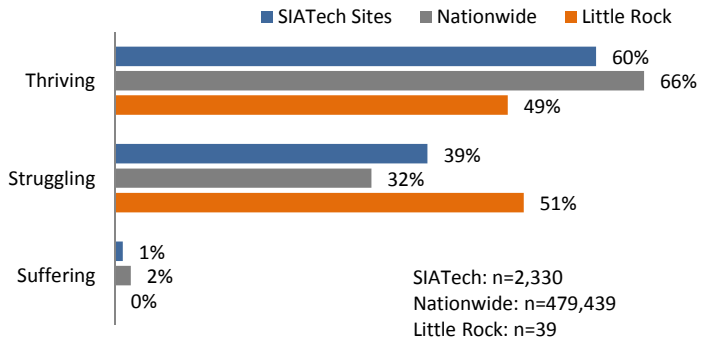


### Well-Being

How we think about and experience our lives. It is an indicator of how students are currently doing and is a predictor of future success. In 2012-2013, 49% of SIATech Little Rock students were thriving in 2013-2014.

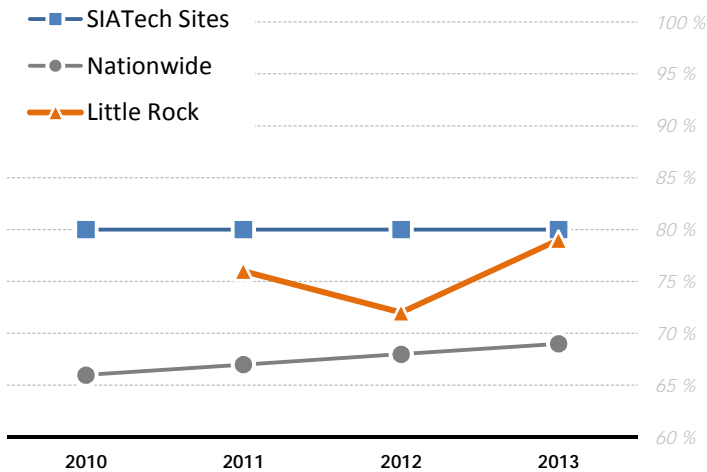
SIATech Little Rock students responded more positively to the following well-being indicators: at school they are treated with respect, have enough energy to get things done, and have family and friends to count on.

### Well-Being Overview



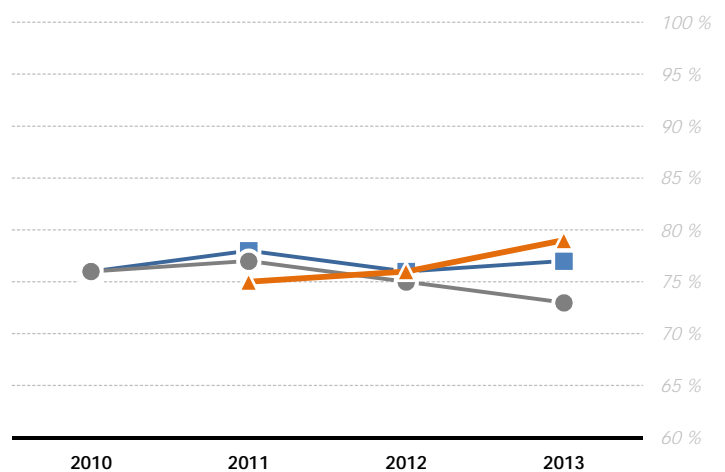
### Treated with Respect

Q: Where you treated with respect all day yestirday?



### Enough Energy

Did you have enough energy to get things done yesterday?



The "nationwide" data reflects an aggregate of the convenience sample of schools and are not representative of US student populations. They are provided as a guide to view how SIATech's results compare to the national sample results.

