

# GALLUP Student Poll Results Summary

2014-2015 Gainesville

## Overview

The Gallup Student Poll measures hope, engagement, and well-being. SIATech administered the poll in Fall 2014 along with nearly a half million other high school students nationwide. In the four years administering the poll, many of the questions have received higher responses than student responses nationwide. The poll reflects the many ways SIATech provides an excellent educational environment for its students.

## Hope

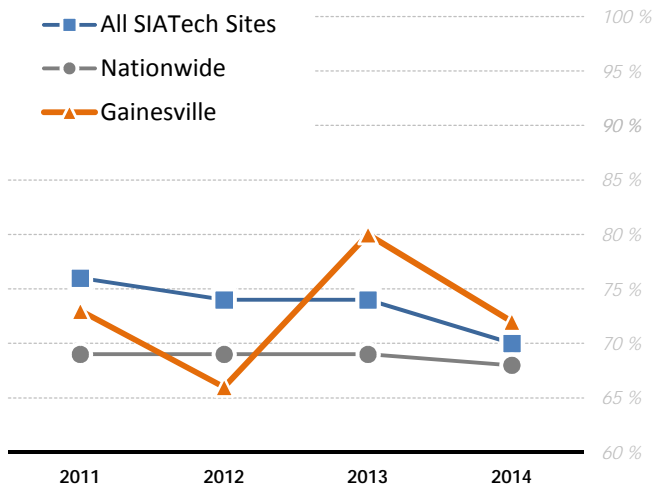
The ideas and energy we have for the future. Hope drives attendance, credits earned, and high school GPA, and is a predictor of college GPA and retention.

About half of SIATech Gainesville students were hopeful (49%) in 2014-2015.

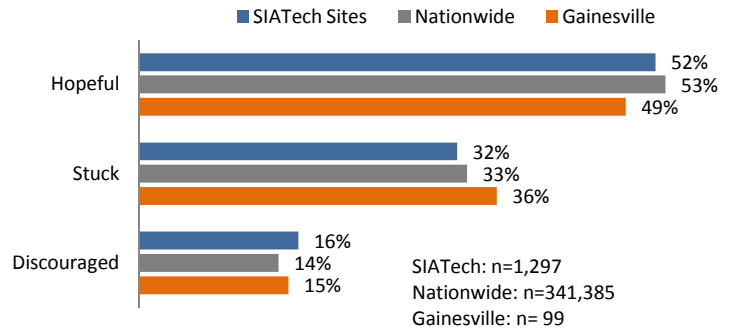
SIATech Gainesville nears or surpasses national averages in the following hope indicators: confidence in graduation, recognition of a caring adult, confidence in getting good grades, creative problem-solving, goal pursuit, and confidence in finding a good job.

### Creative Problem-Solving

Q: I can find lots of ways around any problem.

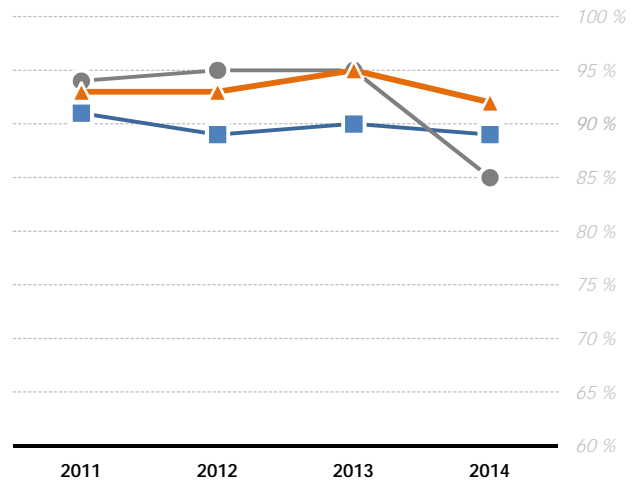


### Hope Overview



### Find a Good Job

Q: I know I will find a good job after I graduate.

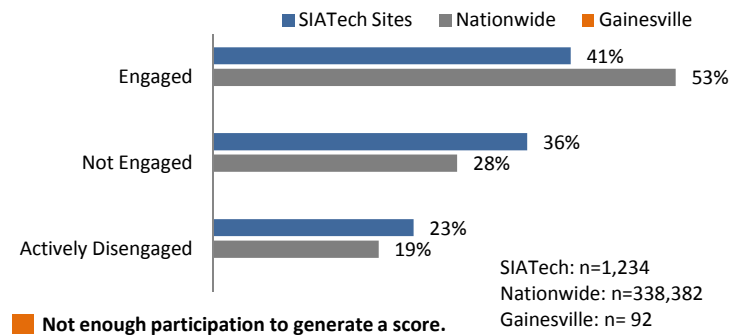


## Engagement

The involvement and enthusiasm for school. According to Gallup, engagement scores separate high-performing from low-performing schools.

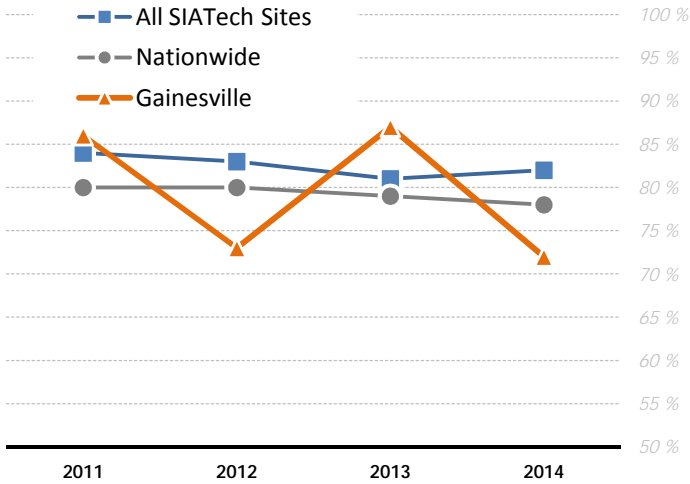
SIATech Gainesville near or surpasses national responses in the following engagement indicators: feel safe, schoolwork is considered important, school provides an opportunity to do their best, receipt of recognition or praise for schoolwork, the school is committed to strengths of each student, and have an inspiring teacher.

### Engagement Overview



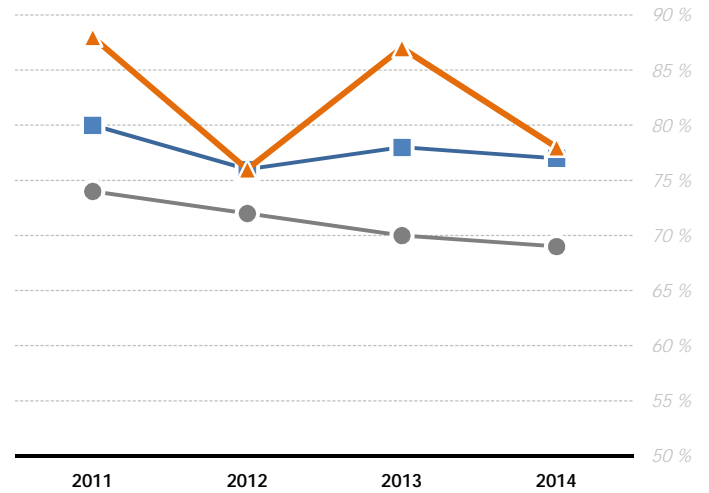
### Schoolwork Important

Q: My teacher makes me feel my schoolwork is important.



### School Committed to Strengths

Q: My school is committed to building the strengths of each student.

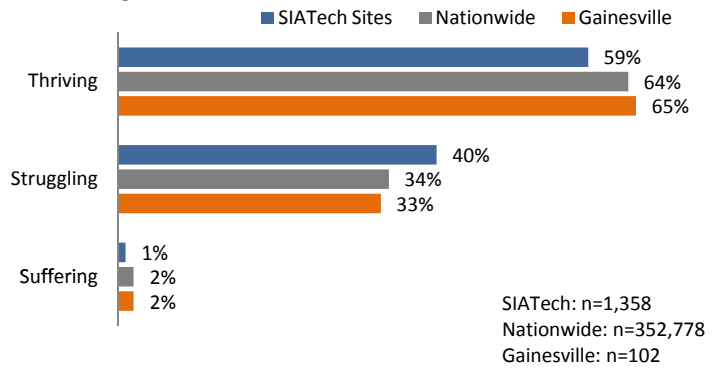


### Well-Being

How we think about and experience our lives. It is an indicator of how students are currently doing and is a predictor of future success. In 2014-2015, 65% of SIATech Gainesville students were thriving.

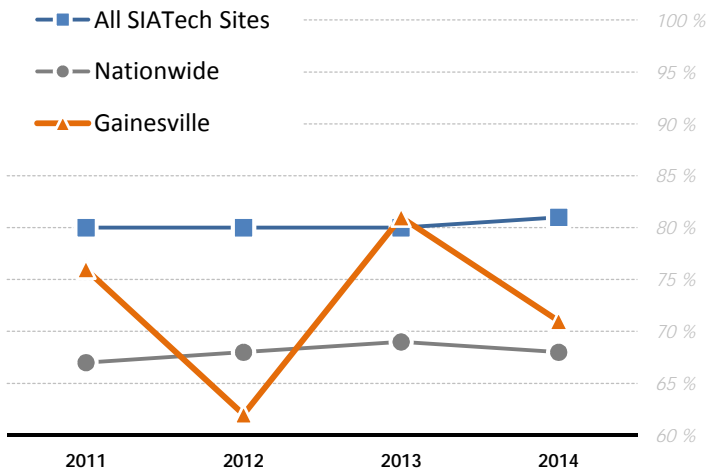
SIATech Gainesville students responded more positively to the following well-being indicators: have enough energy to get things done, at school they were treated with respect, learn to do something interesting, and have family and friends they can count on.

### Well-Being Overview



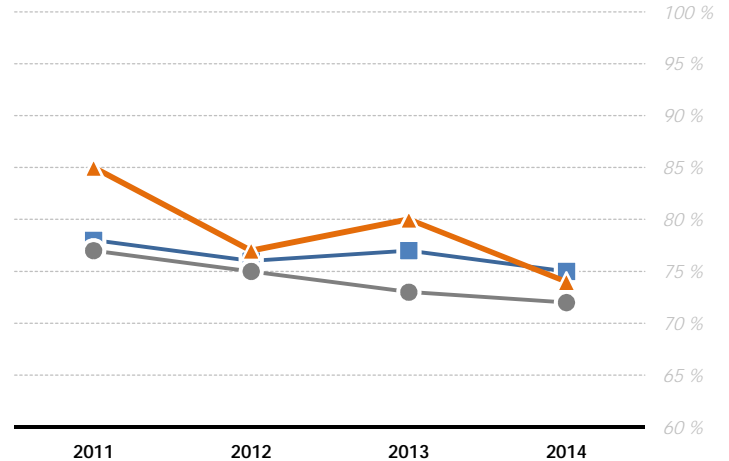
### Treated With Respect

Q: Were you treated with respect all day yesterday?



### Enough Energy

Q: Did you have enough energy to get things done yesterday?



The "nationwide" data reflects an aggregate of the convenience sample of schools and are not representative of US student populations. They are provided as a guide to view how SIATech's results compare to the national sample results.

